

ASSOCIATION OF CALIFORNIA  
SYMPHONY ORCHESTRAS

(Vision + Leadership)

x Energy

Success

23<sup>RD</sup>

ANNUAL  
CONFERENCE

AUGUST  
22 - 24, 1991

Hosted by the  
San Diego Symphony  
& The La Jolla Chamber  
Music Society



# Del Rosenfield Associates ARTISTS ROSTER 1991-93

## CONDUCTORS

Michael Bartos  
\*Gisèle Ben-Dor  
Eduardo Otergren  
Yuval Zaliouk

\*Resident Conductor of the Houston Symphony Orchestra, Music Director of the Boston Pro Arte Chamber Orchestra and Music Director/Conductor of the Annapolis Symphony

## KEYBOARD

Bruce Brubaker, piano  
Babette Hierholzer, piano  
Masanobu Ikemiya, piano  
Diana Kacso, piano  
Mina Miller, piano  
Miceál O'Rourke, piano  
Mary Sadovnikoff, fortepiano  
Rita Sloan, piano

## STRINGS

\*Margaret Batjer, violin  
Nancy Green, cello  
Chin Kim, violin  
Ora Shiran, violin  
Hans Roelofsen & Rudolf Senn, Dutch double bass duo  
Ruth Waterman, violin

\*California Arts Council Touring Roster, 1992-93-94

## WINDS

Raffaello Orlando, clarinet

## SPECIAL ATTRACTIONS

An Evening of American Song:  
Jackie & Roy, jazz vocalists

714 Ladd Road, Riverdale, Bronx, New York 10471  
212/549-5687, 543-8604; Fax 212/548-4313

## 23rd Annual Conference

### Association of California Symphony Orchestras

(Vision + Leadership)

x Energy

---

Success

hosted by

**The La Jolla Chamber Music Society**

*Heiichiro Ohyama, Music Director*

and

**The San Diego Symphony**

*Yoav Talmi, Music Director*



**August 22 - 24, 1991**

*Marriott Suites Symphony Towers  
San Diego*

# FROM ACSO'S PRESIDENT



Dear Friends and Colleagues,  
Welcome to the 1991 ACSO Conference!

These three days in San Diego and La Jolla are important for me as they will be a brief but necessary escape from the rigors of season preparation, budget worries and the general chaos which marks the end of summer and beginning of the fall season. This year, in particular, as we are all suffering from the troubles of budget shortfalls, economic downturns and slumping subscription sales, a time for us to work together, brainstorm, commiserate, and support one another will be extremely important.

On the positive side, orchestras throughout the state are musically healthier and happier than ever. We can rejoice in the superb music and look forward to great music as the reward for our efforts.

Someone very clever must have known last February, when dreaming up the title and focus of this conference, that we would need a good dose of:

**(Vision + Leadership) x Energy = Success**

I hope you all give and get the most from the Conference and that it provides the strength, conviction, determination and enthusiasm necessary to make 91/92 another memorable, successful season.

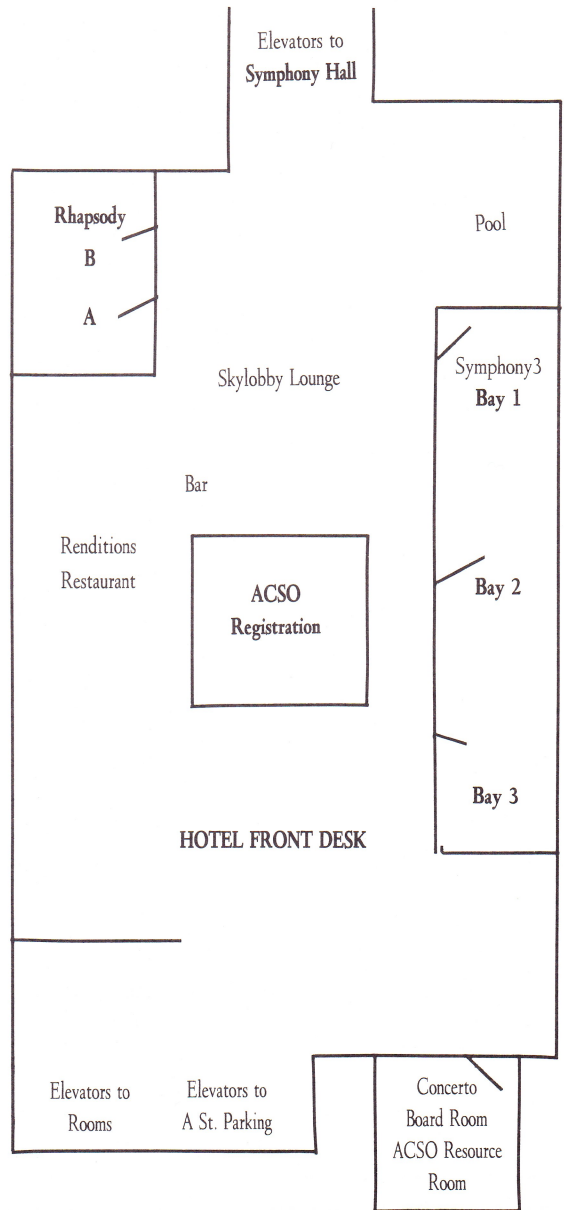
Oh, by the way, have fun too!

All the best,

Deborah Rutter  
President

# SAN DIEGO **Marriott** SUITES

701 A Street, San Diego, California 92101 (619) 696-9800



*Now Booking for 1992-93*

---

## **NEIL RUTMAN, Pianist**

- 1st Place Concert Artist Guild
- California Orchestras
  - San Jose Symphony — 1990
  - Modesto Symphony — 1991
  - Peninsula Symphony — 1991
  - Long Beach Symphony — 1992-93
- CAC Touring Roster

---

## **Arioso Wind Quintet**

- Concerti for Woodwind Quintet and Orchestra by American Composers
- 1990 Winner of the Chamber Music Competition of the National Flute Association
- CAC Touring Roster

---

## **Sparkling singers for pops, including programs of**

- Rogers and Hammerstein
- Lerner and Loewe
- Porgy and Bess

---

### **CLASSICAL PERFORMING ARTISTS MANAGEMENT**

7758 Ludington Place La Jolla, CA 92037  
(619) 456-3878 FAX (619) 456-1752

Talent Agency/Calif. Lic. # TA 1548

**Constance Mullin, Manager**

---



## **CURRENT HIGHLIGHTS**

**BOSTON SYMPHONY ORCHESTRA**  
(Saint-Saens No. 2)  
June 9 & 16, 1991

**NATIONAL SYMPHONY ORCHESTRA**  
(Mozart K. 491)  
JUNE 15, 1991

**COLORADO SYMPHONY ORCHESTRA**  
(Prokofiev No. 3)  
OCTOBER 10, 11, 12, 1991

**UTAH SYMPHONY ORCHESTRA**  
(Rachmaninoff No. 2)  
MAY 1, 2, 1992

REPRESENTED BY:

**MELVIN  
KAPLAN**  
INCORPORATED

115 COLLEGE STREET  
BURLINGTON, VT 05401  
(802) 658-2592

**T**he Association of  
California Symphony  
Orchestras gratefully  
acknowledges Columbia Artists  
Management Inc. for sponsoring the  
luncheon in honor of Andre Previn,  
Saturday, August 24 for ACSO  
delegates.

**CAMII**

Columbia Artists Management Inc.  
165 WEST 57TH STREET, NEW YORK, NY 10019

**SIEGEL ARTIST MANAGEMENT**

Congratulates

**Pianist, BRIAN GANZ**

**THIRD PLACE WINNER-1991**

QUEEN ELIZABETH INTERNATIONAL PIANO COMPETITION

"We are indebted to Brian Ganz for a musical  
experience of the highest level"

"His rendition of Prokofiev's third concerto  
is dazzling from beginning to end"

— LE SOIR

"The Smile and Authority of a Master"

"We don't have the words to speak of this fabulous  
musician who lives music with a generous urgency  
and brings his public into a state of intense joy"

— LA LIBRE BELGIQUE

**Complete Press Materials, Repertoire,  
and Availability - 1992-93 Season**

**Contact:**

**Ethel Siegel**

**(202) 966-0003 Fax (202) 363-3811**

**3003 Van Ness St. NW, Suite W205, Washington, DC 20008**

or

**Jeanie Thompson**

**(904) 325-8080 Fax (904) 329-9160**



## 1991 ACSO CONFERENCE

### Conference Chairmen

Wesley O. Brustad, *Executive Director,*  
San Diego Symphony  
Neale Perl, *Executive Director,*  
The La Jolla Chamber Music Society

### Conference Manager

Kathryn R. Martin, *Production Manager,*  
Music Department, University of California, San Diego

### On-Site Coordinator

Pia Sieroty Spector, *Administrative Assistant, ACSO*

### Registration Coordinator

Ruth Beamish, *President, San Diego Symphony League*

### Conference Committee

Brenda Baker, *President, The La Jolla Chamber Music Society*  
Carol Cunning, *Board of Directors, ACSO*  
Peggy Duly, *Board of Directors, ACSO*  
Linda Goldman, *SummerFest Administrator,*  
The La Jolla Chamber Music Society  
Lynn Hallbacka, *General Manager, San Diego Symphony*  
Roberta Hill, *Volunteer, San Diego Symphony League*  
Pam Lee, *Board of Directors, ACSO*  
Sharon McNalley, *Board of Directors, ACSO*  
Marie Olesen, *Chair, SummerFest La Jolla '91*  
Deborah Rutter, *President, ACSO*  
Joan Salb, *Board of Directors,*  
The La Jolla Chamber Music Society  
Margaret Trower, *Volunteer, San Diego Symphony League*

Many thanks to the members of the ACSO Conference Committee, the ACSO Board of Directors and the staff and volunteers of The La Jolla Chamber Music Society and the San Diego Symphony for their time and commitment to this conference.

### Conference Registration & Tickets:

Hours:	Thursday, August 22	7:30 am - 5:00 pm
	Friday, August 23	7:30 am - 5:00 pm
	Saturday, August 24	7:30 am - 12:00 noon

Conference registration and special event tickets can be paid for by cash or check only, payable to ACSO. Tickets for meals or concerts cannot be exchanged or refunded.

— Concerto Board Room —

Orchestra Brochures  
Artist Managers Brochures and Rosters  
Computer Information

## 1990 - 91 CONTRIBUTORS



The Association of California Symphony Orchestras gratefully acknowledges the support of its many good friends whose contributions help ACSO to continue its service to the orchestra community.

### Major Gifts

ASCAP

California Arts Council

Chevron U.S.A. Inc.

Columbia Artists Management Inc.

Peggy E. Duly

Stephen Dunn & Associates

The Ann and Gordon Getty Foundation

The James Irvine Foundation

The David and Lucile Packard Foundation

### Gifts \$300 and above

Laurel Karabian ..... Los Angeles

Deborah Rutter ..... Los Angeles Chamber Orchestra

### Gifts \$150 - \$299

Larry Balakian ..... Fresno Philharmonic

Karine Beesley ..... Ventura County Symphony

George Boomer ..... Boomer Enterprises, Inc.

Denis de Coteau ..... San Francisco Ballet

Pauline Fisher ..... Santa Rosa Symphony

G. Michael Gehret ..... San Francisco Symphony

Rhoda H. Goldman ..... San Francisco Symphony

Pamela Lee ..... Stockton Symphony

Douglas N. McLendon ..... San Jose Symphony

Sharon McNalley ..... Los Angeles Chamber Orchestra

Patricia A. Mitchell ..... Los Angeles Music Center Opera

Mary E. Newkirk ..... Long Beach Symphony

Neale A. Perl ..... La Jolla Chamber Music Society

Jean Reed ..... Santa Rosa

Kris Woodard Saslow ..... Assn. Calif. Symphony Orchestras

Louis G. Spisto ..... Pacific Symphony

Ann Vander Ende ..... Philharmonia Baroque Orchestra

Erich A. Vollmer ..... Orange County Philharmonic Society

### Gifts \$60 - \$149

Charles Bonner ..... Fresno Philharmonic

Carol Cuning ..... CCS International

JoAnn Falletta ..... Long Beach Symphony

Nellie Fay ..... Napa Valley Symphony

Robert J. Feder, M.D. .... Los Angeles Chamber Orchestra

David Folsom-Jones ..... Santa Cruz County Symphony

Kenneth H. Goldman ..... Pacific Symphony

John Larry Granger ..... South Coast Symphony

Ardis Higgins ..... Santa Barbara Symphony

Barry Jekowsky ..... California Symphony

Dr. Ernest Lewis ..... Sacramento Symphony

## Gifts \$60 - \$149 (continued)

Nancy Mims ..... San Francisco Symphony

Donald E. Osborne ..... California Artists Management

Peggy Peterson ..... San Luis Obispo County Symphony

Harold Trent Power ..... Oakland East-Bay Symphony

Dr. Gary S. Smith ..... Ohlone College

Joseph Truskot ..... Monterey County Symphony

Joyce Wright ..... Monterey County Symphony

Nahum Zimmer ..... Los Angeles Chamber Orchestra

### Gifts \$40 - \$59

Miriam Abrams ..... The Women's Philharmonic

Leni Isaacs Boorstin ..... Los Angeles Philharmonic

Robert Davidson, Jr. .... Los Angeles Chamber Orchestra

Betty Fingold ..... San Francisco Symphony

Cricket Handler ..... San Luis Obispo County Symphony

Jeanne Karatsu ..... Long Beach Symphony Guild

Mike Lewis ..... Stockton Symphony

Kathryn R. Martin ..... University of California, San Diego

Irene Klug Nielsen ..... Fresno Philharmonic

Nancy Schneider ..... Stockton Symphony

Christopher Story, IV ..... West Coast Symphony

Rev. Canon John S. Yaryan ..... Santa Rosa Symphony

### Gifts Under \$39

Paul Bonaccorsi ..... Fremont-Newark Philharmonic

Robert T. Cherry ..... Fresno Philharmonic

Dr. Richard Fiske ..... Shasta Symphony

David Gersh ..... Los Angeles Chamber Orchestra

Mary Gifford ..... Sacramento Symphony

Pearl Gunsell ..... Fremont-Newark Philharmonic

Jean Harrison ..... Santa Rosa Symphony League

David Ingalls ..... Los Angeles Chamber Orchestra

Matthias Kuntzsch ..... San Francisco

Ethel London ..... Oakland Youth Orchestra

William H. Lynch ..... Stockton Symphony

Virginia McFann ..... Livermore-Amador Symphony

Mehli Mehta ..... American Youth Symphony

Faye Prout ..... Los Angeles Chamber Orchestra

Edith Roberts ..... Pasadena Symphony

Donald M. Ross ..... Antelope Valley Symphony

James Schwabacher, Jr. .... San Francisco Symphony

Shirley Seeley ..... Glendale Symphony

Dorothy R. Seiwel ..... Antelope Valley Symphony

Margeaux Singleton ..... San Francisco

Gang Situ ..... San Francisco

David Smyth ..... Sierra Symphony

De-yi Tang ..... San Francisco

Special thanks to the following friends of ACSO who have provided in-kind services or merchandise during the year or for the Annual Conference:

ARTS Inc.  
Edward and Natalie Duke  
Mr. Wally Dunning, Computer Consultant  
Essary Dal Porto & Lowe, Certified Public Accountants  
Littler, Mendelson, Fastiff & Tichy, Attorneys at Law  
Los Angeles Chamber Orchestra  
Long Beach Symphony Association  
Pacific Symphony  
San Diego Symphony  
San Francisco Symphony  
The La Jolla Chamber Music Society  
Tom's Printing

Thank you to "Goody Bag" donors:

Acorn Press  
Marriott Suites Hotel  
San Diego Convention & Visitors Bureau

The Association of California Symphony Orchestras  
is supported in part by a grant from  
the California Arts Council.

Illustration & Design By: CRSR Designs Inc.  
Kingston, New York

**PLEASE WEAR YOUR  
NAME BADGE  
AT ALL TIMES**

# Thursday, August 22<sup>ND</sup>

7:30 am -  
5:00 pm  
Skylobby Lounge  
Concerto Board Room

**CONFERENCE  
REGISTRATION**

8:30 am -  
10:00 am  
Tables #1-6  
Rhapsody  
Tables #7-12  
Symphony Bay

**ACSO RESOURCE ROOM**

**PEER FORUMS FOR STAFF  
AND VOLUNTEERS**

Informal discussion groups for volunteers, managers and executive directors for like-sized orchestras.

- Coordinator:** *Karine Beesley*, Executive Director, Ventura County Symphony
- Table #1** **Managers/Orchestras with budgets to \$250,000**  
*Lynda Collum*, Executive Director, Mesa (AZ) Symphony
- Table #2** **Managers/Orchestras with budgets \$250,000-\$500,000**  
*David Folsom-Jones*, Executive Director, Santa Cruz County Symphony
- Table #3** **Managers/Orchestras with budgets \$250,000-\$500,000**  
*Tamra Saylor*, General Manager, San Diego Chamber Orchestra
- Table #4** **Managers/Orchestras with budgets \$500,000-\$1,000,000**  
*Irene Klug Nielsen*, General Manager, Fresno Philharmonic
- Table #5** **Managers/Orchestras with budgets over \$1,000,000**  
*Douglas N. McLendon*, President, CEO, San Jose Symphony
- Table #6** **Managers/Directors of College & University Orchestras**  
*Dr. Gary S. Smith*, Division Director, Ohlone College Community Orchestra
- Table #7** **Managers/Directors of Youth Orchestras**  
*Nancy Houston*, General Manager, Valley Youth Orchestras

- Table #8 **Managers/Music Festivals**  
*Nancy Laturno*, General Manager,  
Mainly Mozart Festival
- Table #9 **Development Directors**  
*Eve Henderson*, Director of  
Development, Orange County  
Philharmonic Society
- Table #10 **Marketing Directors**  
*John MacElwee*, Director of Marketing,  
Pacific Symphony
- Table #11 **Operations & Assistant Managers**  
*Jim Medvitz*, Director of Operations,  
Pacific Symphony
- Table #12 **Volunteers - A Conference Orientation**  
*Pam Lee*, Board Member,  
Stockton Symphony;  
*Sharon McNalley*, Board Member,  
Los Angeles Chamber Orchestra

10:00 am -  
11:30 am

Tables #1-6  
Rhapsody

Tables #7-12  
Symphony Bay

**2ND ANNUAL INNOVATIVE  
CASE STUDIES**

Roundtable discussions of creative ideas and success stories with an emphasis on practical solutions and examples.

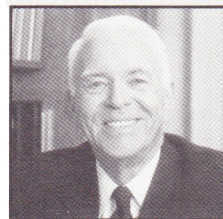
**Format:** The case study leader will initiate and prepare agenda, but the discussion will be participatory.

- Coordinator:** *Priscilla Munson*, Artistic Manager,  
Long Beach Symphony
- Table #1 **Developing a Support Organization**  
*Laila Conlin*, Founding President,  
Opera Pacific Guild Alliance
- Table #2 **Video of Your Orchestra -  
Is This For You?**  
*Richard J. Frank*, Director of  
Development/Producer, American  
Youth Symphony
- Table #3 **So You Want To Open A  
Symphony Store**  
*Ruth Beamish*, President,  
San Diego Symphony League
- Table #4 **Does A Symphony League Need A  
Long Range Plan? Yes!**  
*Susan Weir*, Past President,  
Long Beach Symphony Guild

- Table #5 **Forging School/Orchestra Partnerships  
for Successful Music Education  
Programs and Audience Development**  
*Bill Burke*, Executive Director,  
California Music Educators;  
President, Diablo Symphony
- Table #6 **New Marketing Technologies:  
Micro-marketing for Symphonies**  
*George Boomer*, President,  
Boomer Enterprises, Inc.
- Table #7 **Philharmonic Style: Capturing  
the Younger, Newer Concertgoer**  
*Steve Linder*, Assistant Director of  
Marketing & Communications,  
Los Angeles Philharmonic
- Table #8 **Effectively Orchestrating the  
Day-to-Day Operations of a  
1, 2 or 3 Person Office**  
*Doreen Hardy*, General Manager,  
South Coast Symphony
- Table #9 **"Where's The Fire?" A Smoke  
Detector Fiscal Model**  
*Larry Hudspeth*, Finance Director,  
Long Beach Symphony
- Table #10 **The Art of Personal Wellness:  
Who Takes Care of the Manager?**  
*Priscilla Munson*, Artistic Director,  
Long Beach Symphony
- Table #11 **New Campaigns at the  
LA Philharmonic: Early Subscription  
Renewals, Junior Patrons Program  
and A 5K/10K Run**  
*Frances Muir*, Past Chairman,  
Los Angeles Philharmonic  
Affiliates Coordinating Board
- Table #12 **Bravo! A Successful Young  
Professionals Affiliate**  
*Annette Rocha*, Past President,  
Long Beach Symphony Bravo!

12:30 pm -  
2:00 pm

Copley Symphony  
Hall Foyer



**OPENING GENERAL LUNCHEON**

**Host:**

*Wesley O. Brustad*, Executive Director,  
San Diego Symphony

**Guest Speaker:**

*Dr. William J. McGill*,  
Past President, Columbia University;  
Past Chancellor, University of  
California, San Diego



2:30 pm -  
4:30 pm  
Symphony Bay

**GENERAL SESSION**

Inspiration From Successful Leaders  
In The Corporate World

**Moderator:** **Wesley O. Brustad**,  
Executive Director,  
San Diego Symphony

**Panelists:** **Father Joe Carroll**, Director,  
St. Vincent De Paul,  
Joan Kroc Center

**Terry Churchill**,  
Area Vice President,  
Pacific Bell; President,  
Old Globe Theatre

**Howard E. (Ted) Greene, Jr.**,  
Chairman and CEO,  
Amylin Corporation

6:30 pm  
Hotel Main  
Entrance

Meet to walk to C & 6th Streets to  
board San Diego Bayside Trolley  
to Pops  
(Gaslamp Convention Stop)

7:30 pm

**CABARET DINNER AND  
THE SAN DIEGO SYMPHONY**

*SummerPops '91*

Jack Everly, Conductor  
Steven Mayer, Piano  
Damian Bursill-Hall, Flute  
Isabella Lippi, Violin

Post-concert reception hosted onstage  
by the San Diego Symphony  
Orchestra Association

7:30 am -  
5:00 pm  
Skylobby Lounge

**CONFERENCE  
REGISTRATION**

8:00 am -  
12:00 pm  
Symphony Bay 2

**PERSONAL DEVELOPMENT  
SEMINAR — The Effective  
Conductor: A Matter of  
Communication And Personality**

This seminar will teach you how  
understanding your personal  
characteristics can be useful in your  
relationships with musicians,  
managers and audiences.

**Host:**

**Thomas Osborn**, Music Director,  
Downey Symphony;  
Seaver Community Orchestra



**Barbara Pollack, Ph.D.**

Dr. Pollack is a clinical  
psychologist and musician. Her  
studies have been related to the  
complex relationships of different  
personality types and styles of  
communication. In June, 1990, she  
presented a paper in London at the  
International Conference on the  
Psychology of Performing Arts.

9:00 am -  
10:30 am  
Rhapsody A

**CONCURRENT SESSIONS:**

**1. ARTIST MANAGERS &  
ORCHESTRA MANAGERS:  
Oil and Water Do Mix!**

**Moderator:** **Erich A. Vollmer**, Executive Director,  
Orange County Philharmonic Society

**Panelists:** **Anne Bernardo**, General Manager,  
Tulare County Symphony  
**Carol Cunning**, Owner/Manager,  
CCS International  
**Tim Fox**, West Coast Booking Rep.,  
Columbia Artists Management Inc.  
**Welz Kauffman**, General Manager,  
Los Angeles Chamber Orchestra  
**Irene Klug Nielsen**, General Manager,  
Fresno Philharmonic

Symphony Bay 1 **2. VOLUNTEER SKILLBUILDERS I: The Dynamic Leader - Setting The Tempo, Knowing The Score**

**Moderator:** *Sharon McNalley*, Board of Directors, Los Angeles Chamber Orchestra

**Panelists:** *Joanne Austin*, Board of Directors, Los Angeles Philharmonic Affiliates  
*Susan Beechner*, Board of Directors, Orange County Philharmonic Society  
*Alice Coulombe*, Board of Directors, Los Angeles Opera

Rhapsody B **3. PLANNING YOUR SEASON: Audience Forecasting Using Current Economic Indicators**

**Host:** *Betty Fingold*, Financial Analyst, San Francisco Symphony

**Panelists:** *Brent Assink*, General Manager, San Francisco Symphony  
*George Boomer*, President, Boomer Enterprises, Inc.

10:45 am -  
12:15 pm  
Rhapsody A

**CONCURRENT SESSIONS:**

**1. FUND RAISING IN TOUGH TIMES**

**Host:** *Louis G. Spisto*, Executive Director, Pacific Symphony

**Panelists:** *Ann Campbell*, Development Director, San Diego Opera  
*Stephen Dunn*, Stephen Dunn & Associates  
*Neale Perl*, Executive Director, La Jolla Chamber Music Society

Symphony Bay 1 **2. VOLUNTEER SKILLBUILDERS II: From Overture To Ovation - Attracting Volunteers**

**Moderator:** *Pam Lee*, Board Member, Stockton Symphony

**Panelists:** *George Boomer*, President, Boomer Enterprises, Inc.  
*Paulette Goodrich*, Volunteer Council Chairman, San Francisco Symphony  
*Janice Johnson*, Board of Directors, Pacific Symphony; Chairman of Guilds, Orange County Performing Arts Center

Rhapsody B **3. KEY PERSONNEL ISSUES/ EMPLOYMENT LAW**  
What state and federal requirements for employers are applicable to you; what agencies you need to become acquainted with, even if you are the only staff member; why orchestra members are not independent contractors; wage & hour issues for every employer; why ignorance of the law provides no protection for non-compliance.

**Moderator:** *Karine Beesley*, Executive Director, Ventura County Symphony

**Panelists:** *Nancy Mims*, Director, Human Resources, San Francisco Symphony  
*Mary Lee Thomson*, Attorney, Littler, Mendelson, Fastiff & Tichy

12:30 pm -  
1:30 pm

**LUNCH ON YOUR OWN OR SPECIAL INTEREST LUNCH**

Renditions' Private Restaurant

**CONDUCTORS**

Dutch Treat Lunch with *Heiichiro Ohyama*, Artistic Director, La Jolla SummerFest (sign up at ACSO Registration Desk)

President's Room  
Copley Symphony Hall

**VOLUNTEERS AND TRUSTEES**

Dutch Treat Lunch with *George Sebastian*, Marketing Director, Los Angeles Chamber Orchestra "Backstage Disasters!" (sign up at ACSO Registration Desk)

1:30 pm -  
3:00 pm  
Rhapsody A

**CONCURRENT SESSIONS:**

**1. CALIFORNIA COMPOSERS' SHOWCASE:** A presentation of scores and recordings of recent works by California-based composers.

**Host:** *Kathryn R. Martin*, Production Manager, Music Department, UCSD

**Speaker:** *Stephen Hartke*, Composer-in-Residence, Los Angeles Chamber Orchestra

Symphony Bay 1 **2. VOLUNTEER SKILLBUILDERS III: Publicizing Your Projects - Fanfare On A Budget**

**Moderator:** *Sue Dewar*, Past President, ACSO; Monterey County Symphony  
**Panelists:** *Ann Giesler*, Coordinator, Volunteer Activities, Los Angeles Philharmonic  
*Ursula Kroemer*, Special Projects Editor, KFMB Radio  
*Les Smith*, Public Relations Director, San Diego Symphony

Symphony Bay 2 **3. THE WORLD OF THE MANAGER**

**Host:** *Polly Fisher*, General Manager, Santa Rosa Symphony  
**Speaker:** *Louis G. Spisto*, Executive Director, Pacific Symphony

3:15 pm -  
 4:30 pm  
 Rhapsody A

**CONCURRENT SESSIONS:**

**1. THE ORCHESTRA'S ROLE IN CREATING NEW REPERTOIRE: How To Commission**

Commissioning procedures: identifying the composer you want, determining fees, mutual responsibilities, drawing up contracts and making the most of your collaboration with a composer.

**Moderator:** *Stephen Hartke*, Composer-in-Residence, Los Angeles Chamber Orchestra  
**Panelists:** *Miriam Abrams*, Executive Director, The Women's Philharmonic  
*Deborah Rutter*, Executive Director, Los Angeles Chamber Orchestra  
*Rand Steiger*, Composer; Faculty, U.C. San Diego

Symphony Bay  
 2 & 3

**2. ALL IN THE FAMILY: Discussing And Resolving Sticky Problems**

The "Family" consists of trustees, volunteers, management, musicians, audiences and the community.

**Host:** *Pam Lee*, Board Member, Stockton Symphony  
**Moderator:** *Joseph Truskot*, Executive Director, Monterey County Symphony  
**Panelists:** *Jean Harrison*, President, Santa Rosa Symphony League  
*Kenneth Herman*, Music Writer, Los Angeles Times, San Diego Edition  
*Ron Leonard*, Principal Cellist, Los Angeles Philharmonic  
*Douglas N. McLendon*, President/CEO, San Jose Symphony  
*Donn Schroeder*, Violist, Monterey County Symphony; President-Administrator, AF of M Local 616  
*Sharlene Strawbridge*, Assistant Director of Development, Donor/Volunteer Relations, Pacific Symphony  
*Jack Everly*, Guest Conductor, San Diego SummerPops  
*Miriam Willie*, President, Ventura County Symphony

Symphony Bay 1 **3. PUBLIC RELATIONS AND YOUR INSTITUTIONAL IMAGE**

**Host:** *George Sebastian*, Marketing Director, Los Angeles Chamber Orchestra  
**Speaker:** *Robert Bleiweiss*, Bleiweiss Communications Inc.

6:00 pm  
Hotel Main  
Entrance

Board Buses to Mandeville  
Auditorium, UCSD Campus

**SummerFiesta Dinner**

8:00 pm

**LA JOLLA CHAMBER  
MUSIC SOCIETY  
SUMMERFEST '91  
CHAMBER ORCHESTRA  
CONCERT**

*Heiichiro Ohyama and  
Andre Previn conducting*

Gary Hoffman, Cello  
Carolyn Hove, English Horn  
Cho-Liang Lin, Violin  
Thomas Stevens, Trumpet  
with members of the  
San Diego Symphony

Post-concert reception hosted onstage  
by The La Jolla Chamber Music  
Society Board of Directors

7:30 am -  
12:00 pm  
Skylobby Lounge

**CONFERENCE  
REGISTRATION**

8:00 am -  
9:00 am  
Symphony Bay 3

**ACSO ANNUAL MEETING**  
*Open to all delegates*

9:00 am -  
10:30 am

**CONCURRENT SESSIONS:**

Symphony Bay  
1 & 2

**1. CORPORATE FUND RAISING**

**Moderator:** *Nancy Laturno*, General Manager,  
Mainly Mozart Festival

**Panelists:** *Catherine Austin*, Charitable  
Giving Committee,  
Hewlett-Packard Company  
*Caroline Boitano*, Vice President  
and Associate Director,  
Bank of America Foundation  
*Nancy Glaze*, Program Officer,  
The David and Lucile  
Packard Foundation  
*John Parry*, Nissan Design  
International  
*Dan Ponder*, General Manager,  
The Kingston Hotel

Rhapsody  
A & B

**2. DIVERSIFICATION STRATEGIES  
FOR BOARD, STAFF  
AND AUDIENCES**

**Moderator:** *Deborah Rutter*, Executive Director,  
Los Angeles Chamber Orchestra

**Panelists:** *Catherine French*, Executive  
Vice President and CEO,  
American Symphony Orchestra League  
*Nancy Mims*, Director of Human  
Resources, San Francisco Symphony  
*Paul Minicucci*, Principal Consultant,  
Joint Committee on the Arts  
*Robert Walker*, Executive Director,  
Sacramento Symphony

10:45 am -  
12:15 pm

Symphony Bay 2

**CONCURRENT SESSIONS:**

**1. EFFECTIVE POLITICAL CHANGE - GET INVOLVED!**

Ben Clay, partner in the professional advocacy firm of Carpi & Clay and member of the San Diego Board of Directors, will outline the basic techniques for effective advocacy before telling us how to find some of the "hidden treasures" in local funds. Ms. Boorstin will discuss why we **have** an arts council this year and the effects of the state deficit on music education. Ms. French will bring us up to date on proposed changes in federal laws, including taxation, postage, telemarketing and international artists.

**Moderator:** *Peggy Duly*, President, Mainly Mozart Festival

**Panelists:** *Ben Clay*, Partner, Carpi & Clay  
*Leni Isaacs Boorstin*, Public Affairs Director, Los Angeles Philharmonic; President, California Confederation of the Arts  
*Catherine French*, President and CEO, American Symphony Orchestra League

Symphony Bay 1

**2. CONDUCTORS WEAR MANY DIFFERENT HATS**

**Moderator:** *John Larry Granger*, Music Director, South Coast Symphony; Santa Cruz County Symphony

**Panelists:** *Denis de Coteau*, Music Director, San Francisco Ballet  
*Jennifer Duston*, Executive Director, Marin Symphony  
*John MacElwee*, Director of Marketing, Pacific Symphony  
*Nan Washburn*, Music Director, Camellia Symphony

Rhapsody A

**3. EDUCATION PROJECTS THAT WORK**

**Host:** *David Folsom-Jones*, Executive Director, Santa Cruz County Symphony

**Panelists:** *Richard Bains*, Education Director, San Francisco Youth Orchestra  
*Bert Harclerode*, Artistic Administrator and Education Coordinator, San Diego Symphony

12:30 pm -  
2:00 pm

Copley Symphony Hall Foyer

**LUNCHEON**

**Host:** *Marie Olesen*, Chair, SummerFest La Jolla '91



**Guest Speaker:** *Andre Previn*, Composer, Conductor and Pianist

Luncheon graciously sponsored by Columbia Artists Management Inc.

2:15 pm -  
3:30 pm

Symphony Bay 1

**CONCURRENT SESSIONS:**

**1. POPS...SERIOUS FUN**

**Moderator:** *Peter B. Lane*, Executive Director, New York Pops

**Panelists:** *Lynn Hallbacka*, General Manager, San Diego Symphony  
*Mark McGurty*, Composer/Arranger, Cincinnati Pops Orchestra  
*Newton Wayland*, Principal Pops Conductor, Houston Symphony Orchestra

Rhapsody A

**2. THE ILLS OF THE AMERICAN SOCIETY: Crime, Drugs, Poverty and Diminishing Audiences For Symphony Orchestras**

**Host:** *Karen Kimes*  
**Speaker:** *Murry Sidlin*,  
 Resident Conductor,  
 Aspen Music Festival;  
 Director of Conductors' Apprentice  
 Program, U. of Minnesota

Symphony Bay  
 2 & 3

**3. LEARNING TOP LEADERSHIP SKILLS FROM TOP LEADERS**

**Moderator:** *Mary E. Newkirk*,  
 Executive Director,  
 Long Beach Symphony

**Panelists:** *John Hancock*, President,  
 Long Beach Symphony;  
 Executive Vice President,  
 Security Pacific National Bank  
*Ronald S. Rosen*, Chairman Emeritus,  
 Los Angeles Chamber Orchestra  
*Viviane Warren*, Past President,  
 La Jolla Chamber Music Society;  
 Recent Presidential Appointee,  
 International Broadcasting  
 Task Force

4:30 pm -  
 5:30 pm

**President's Reception**  
 (by invitation only)

8:00 pm  
 Copley Symphony Hall

**LA JOLLA CHAMBER MUSIC SOCIETY SUMMERFEST '91**

**Andre Previn Jazz Trio**  
 Andre Previn, Piano  
 Mundell Lowe, Guitar  
 Ray Brown, Bass

**CCS International**

presents

**ANGELES QUARTET\***

Kathleen Lenski & Roger Wilkie, violins;  
 Brian Dembow, viola; Stephen Erdody, cello  
*"brilliant concert"* San Francisco Chronicle

**FINE ARTS BRASS QUINTET\***

*"a commanding show of virtuosity"* Los Angeles Times

**CLAYTON HASLOP, violin & JACK SANDERS, guitar\***

*"a strong and virtuoso program"* Los Angeles Times

**LOS ANGELES CHAMBER ORCHESTRA WINDS\***

*"their ensemble is immaculate"* New York Times

**MUSICAL OFFERING Baroque Ensemble\***

*"a stunning concert"* Los Angeles Herald-Examiner

**YEHUDA GILAD, conductor**

*"exciting and memorable"* Los Angeles Times

**LINCOLN MAYORGA, piano\***

*"wonderfully artistic"* San Francisco Chronicle

**ARNOLD STEINHARDT, violin/viola**

*"Steinhardt is brilliant"* Miami Herald

**YIZHAK SCHOTTEN, viola**

*"expertly played"* New York Times

**PETER REJTO, cello**

*"Mr. Rejto is an exceptional player"* New York Times

**DAVID SHOSTAC, flute\***

*"extraordinary"* New York Times

**ALLAN VOGEL, oboe\***

*"excellent"* New York Times

**MICHELE ZUKOVSKY, clarinet**

*"brilliant...a virtuoso of first rank"* New York Times

**FRØYDIS REE WEKRE, horn**

*"a flawless performance"* Los Angeles Times

**JACK SANDERS, guitar**

*"thoroughly captivated his audience"* Soundboard



**CCS International**

Concert Management

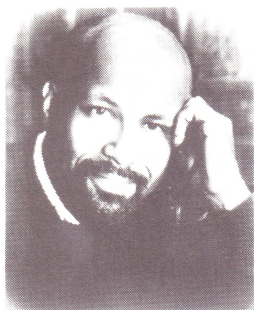
3145 Haddington Drive, Los Angeles, CA 90064

(213) 836-8081 • FAX (213) 836-0348

Carol Cuning, Manager

\*Up to 50% fee reimbursement may be available through the California Arts Council Touring Program.

# An Outstanding Score of Artists



**William Henry Curry,**  
*conductor*

• 1988 Stokowski Award  
"... an imaginative, dynamic and tireless maestro with a soul for the big sound."

—*The Indianapolis Star*

**Carolyn Disnew,**  
*soprano*

"Her... sultry natural instrument of unusual charisma set the opening night audience back on its seats."

—*Opera Guide*

**Terry Edwards,**  
*conductor*

"Under the direction of Terry Edwards, the Voices produced an astonishingly lucid blend of tone..."

—*Daily Telegraph (London)*

**Herbert Handt,**  
*conductor*

"The Orchestra da Camera Lucchese responded with their usual enthusiasm under Maestro Handt's alert and authoritative beat."

—*Daily American (Rome)*

**Linda Hirst,**  
*mezzo-soprano*

"... I don't think I have ever heard such intoxicatingly beautiful singing..."

—*Stereophile*

**Michael Lewin,**  
*pianist*

"His technique and ability qualify him eminently for success."

—*New York Times*



**Anton Kuerti,**  
*pianist*

"Imagine a pianist with intellectual depth, an impeccable technique and a penchant for unconventional interpretations, and you have a glimpse of Anton Kuerti..."

—*Chicago Tribune*

**David Owen Norris,**  
*pianist*

• 1991 Gilmore Artist  
"... Norris possesses the innate musicality and technical virtuosity to warrant his status as an up-and-coming world talent."

—*Kalamazoo Gazette*



**Matti Raekallio,**  
*pianist*

"... a cultivated and finely chiseled pianism... A charming performer and a many-sided musician."

—*Nedelya (Moscow)*

**Alexander Simionescu,**  
*violinist*

"His rapid-fire bowing and fingering... was a beauty to behold."

—*The Press of Atlantic City*

**Christopher Taylor,**  
*pianist*

• Young Gilmore Artist, 1990  
• Kapell Competition Winner, 1990

"Mr. Taylor played a difficult and varied program with extraordinary energy and drive and a kind of interpretive daring..."

—*New York Times*

**Yuli Turovsky,**  
*conductor*

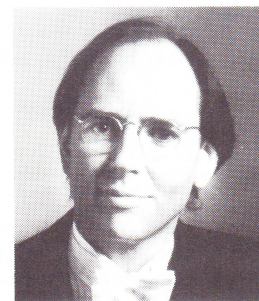
"Turovsky... draws from the players a brilliance of sound and tightness of coordination."

—*The Gazette (Montreal)*

**Andrew Parrott,**  
*conductor*

• EMI Recording Artist  
"[He] kept everything moving with buoyant rhythms and clean, well-balanced textures... the real hero of the occasion was Parrott."

—*Chicago Tribune*



**JONATHAN  
WENTWORTH  
ASSOCIATES, LTD.**

Lincoln Building, Suite 503  
100 Stevens Avenue  
Mt. Vernon, NY 10550

Telephone: 914/667-0707  
Fax: 914/667-0784

# HB HERBERT BARRETT MANAGEMENT

## CONDUCTORS

David Charles Abell  
 Alan Balter  
 Robert Bernhardt  
 Leif Bjaland  
 Richard Buckley  
 Aldo Ceccato  
 Enrique Diemecke  
 \* Jonathan Dudley  
 Harold Farberman  
 Enrique Garcia-Asensio  
 John Giordano  
 Joseph Giunta  
 Lazar Gosman  
 Raymond Harvey  
 Sung Kwak  
 Louis Lane  
 Jere Lantz  
 Mitch Miller  
 Kirk Muspratt  
 Roger Nierenberg  
 Bernard Rubenstein  
 Kenneth Schermerhorn  
 James Sedares  
 James Setapen  
 Alessandro Siciliani  
 Steven Sloane  
 Sir Michael Tippett  
 Kate Tamarkin  
 Kirk Trevor  
 Evan Whallon

## SPECIAL ATTRACTIONS FOR ORCHESTRA

Golub-Kaplan-Carr Trio  
 ▲ Cris Groenendaal  
 \*\* Ani and Ida Kavafian  
 Magic Circle Mime Co.  
 Billy Taylor Trio  
 Corky Siegel  
 SYMPHONIC BLUES

## PIANISTS

Edmund Battersby  
 Philippe Bianconi  
 David Golub  
 David Korevaar  
 Jerome Lowenthal  
 Benedetto Lupo  
 Panayis Lyras  
 Anne-Marie McDermott  
 Susan Starr  
 † Earl Wild

## VIOLINISTS

Pierre Arnoyal  
 Toshiya Eto  
 Mark Kaplan  
 Ani Kavafian  
 Benny Kim  
 Isabella Lippi  
 Gyorgy Pauk  
 Daniel Phillips  
 Xiao-Dong Wang

## VIOLISTS

Paul Coletti  
 Kim Kashkashian

## CELLISTS

Colin Carr  
 Andrés Díaz  
 Zara Nelsova

## TRUMPET

John Wallace

## FRENCH HORN

David Jolley

## HARPIST

Emily Mitchell

## CLASSICAL GUITARIST

Guillermo Fierres

## NARRATOR

Werner Klemperer

## SOPRANOS

Margaret Cusack  
 Ruth Golden  
 Nikki Li Hartlieb  
 Constance Hauman  
 Elizabeth Holleque  
 Linda Kelm  
 Erie Mills  
 Marilyn Mims  
 Laurinda Nikkel  
 Steffanie Pearce  
 Carmen Pelton  
 Faye Robinson  
 Christine Seltz  
 Jeanine Thames  
 \* Korliss Decker  
 Carol Webber  
 Annalisa Winberg

## MEZZO-SOPRANOS

Jacalyn Bower  
 Kathryn Cowdrick  
 Constance Fee  
 Josepha Gayer  
 Victoria Livengood  
 Robynne Redmon  
 Marietta Simpson

## TENORS

John Absalom  
 † John Aler  
 John Daniecki  
 John Fowler  
 ▲ Cris Groenendaal  
 Donald Kaasch  
 Paul Austin Kelly  
 Gary Lakes  
 Giorgio Lambertini

## BARITONES

Sherrill Milnes  
THE WORLD'S FOREMOST OPERATIC BARITONE  
 Victor Ledbetter  
 Peter Lightfoot  
 Eric McCluskey  
 William Sharp  
 Thomas Woodman

## BASS-BARITONES

Richard Cowan  
 Julien Robbins  
 \* John Shirley-Quirk  
 \* Andrew Wentzel

## BASSES

Brian Jauhainen  
 Kevin Maynor  
 James Patterson

Please see Marna Seltzer at the ACSO Conference

Herbert Barrett, PRESIDENT  
 Nancy Wellman, VICE-PRESIDENT  
 John A. Anderson, VICE-PRESIDENT  
 Mary Lynn Fixler, MANAGER/DIRECTOR OF SALES  
 Rob Robbins, SALES REPRESENTATIVE  
 Marna Seltzer, SALES REPRESENTATIVE  
 Alexandra Bacon, ASSOCIATE, VOCAL DIVISION  
 Marylynn Clemence, SALES ASSISTANT  
 Cathy Gittelsohn, PUBLICITY DIRECTOR  
 Frances Falisey, COMPTROLLER  
 Elizabeth Kirberger, CONTRACTS  
 Laura Hartmann, OPERATIONS DIRECTOR

† Personal Direction, Mary Lynn Fixler  
 \* First Season with Herbert Barrett Management  
 \*\* Ida Kavafian, Harry Beall Management  
 ▲ Pops, Musical Theatre, Operetta

Herbert Barrett Management  
 1776 Broadway, Suite 1800  
 New York, NY 10019

1992-93  
 SEASON

Tel: (212) 245-3530  
 Fax: (212) 397-5860  
 Telex: 4976093 BARRETT

## A Choice For All Seasons!



**BO AYARS**  
*conductor/arranger*  
 The Stars of Las Vegas or Superstars Shine On (Your Town's Name Here), Ayars conducts the

signature songs of some of the world's best-loved entertainers—Liberace, Streisand, Sinatra and Elvis. Other shows available.



**BUTCH THOMPSON**  
*vintage jazz and rags*  
 You grew to know Butch on A Prairie Home Companion. Now hear why his timeless repertoire,

fresh style and relaxed manner make him one of America's finest classic jazz pianists.



**JAMES DAPOGNY'S CHICAGO JAZZ BAND**  
 Dapogny's band Plays It Hot And Heavenly featuring lush Gershwin and Berlin medleys. After the concert, have a ball dancing to lively swing era tunes.

Berlin medleys. After the concert, have a ball dancing to lively swing era tunes.



**THE CHENILLE SISTERS**  
*I've Heard That Song Before*  
 A show as fresh as a new coat of paint. They sing like angels, dress like camp, but could pass for the girls next door.

camp, but could pass for the girls next door.



**BANU GIBSON AND THE NEW ORLEANS HOT JAZZ**

With her gutsy vocals, distinctive style and infectious energy, *The Joint Is Jumpin'* when Banu and her band feature tunes from the heyday of American Popular Songs.



**THE PRISM QUARTET**  
*saxophone and midi ensemble*  
 Exciting new repertoire available for premiere along with seasoned scores feature the graceful musical eloquence of The Prism Quartet. Scores created for the intriguing new sounds of electronic wind controllers are also available.

graceful musical eloquence of The Prism Quartet. Scores created for the intriguing new sounds of electronic wind controllers are also available.



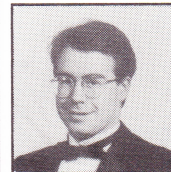
**CARLA CONNORS**  
*soprano*  
 An Award Winning Soprano, Carla gathered accolades for her sparkling voice,

charm and spirited personality as she beautifully recreated the role of Susanna with the New York City Opera Touring Company.



**JEREMY COHEN**  
*jazz and classical violinist*  
 Built through study with Itzhak Perlman, Jeremy's brilliant technique has been

successfully combined with a deep love and innate talent for the swinging, hot styles of the jazz violin.



**MICHAEL WHITCOMBE**  
*alto saxophone*  
 "It's not often that a saxophonist steals the spotlight at an orchestra concert," but the Los Angeles Times

claims this really happened at Michael Whitcombe's orchestral recording debut with Koch International Classics and the San Diego Chamber Orchestra.



**THE JIM CULLUM JAZZ BAND**  
 Look for a new suite specially created for The Jim Cullum Jazz Band to be premiered with The San

Antonio Symphony, April, 1992. The Jim Cullum Jazz Band hosts American Public Radio's nationally distributed radio show, Riverwalk, Live from The Landing.

And new to our roster: **MICHAEL RUSZCZYNSKI** *composer*  
 Young American composer Michael Ruszczyński's award winning works have been widely performed by some of the country's most dynamic ensembles and orchestras. Critics and performers alike have hailed his music as "scintillating", "rapid-fire", "spirited", "engaging", and "virtuosic".

**DONNA ZAJONC MANAGEMENT (313) 662-9137**



## ACSO BOARD OF DIRECTORS

1990 - 91

### Executive Board

President - **Deborah Rutter**, Executive Director,  
Los Angeles Chamber Orchestra  
Secretary - **Pamela Lee**, Board of Directors, Stockton Symphony  
Treasurer - **Douglas N. McLendon**, President, CEO, San Jose Symphony  
Vice President - **Larry Balakian**, Past President, Fresno Philharmonic  
Vice President - **Patricia A. Mitchell**, Managing Director,  
Los Angeles Music Center Opera  
Vice President - **Mary E. Newkirk**, Executive Director,  
Long Beach Symphony  
Vice President - **Louis G. Spisto**, Executive Director, Pacific Symphony  
Vice President - **Erich A. Vollmer**, Executive Director,  
Orange County Philharmonic Society  
Past President - **Pauline Fisher**, General Manager, Santa Rosa Symphony

### Board of Directors

**Miriam Abrams**, Executive Director, The Women's Philharmonic  
**Karine Beesley**, Executive Director, Ventura County Symphony  
**George Boomer**, President, Boomer Enterprises, Inc.  
**Prudence Choi**, Board of Directors, San Jose Symphony  
**Carol Cuning**, President, CCS International  
**Denis de Coteau**, Music Director, San Francisco Ballet  
**Peggy Duly**, President, Mainly Mozart Festival  
**Betty Fingold**, Financial Analyst, San Francisco Symphony  
**David Folsom-Jones**, Executive Director, Santa Cruz County Symphony  
**John Larry Granger**, Music Director, South Coast Symphony;  
Santa Cruz County Symphony  
**Ardis Higgins**, Past President, Santa Barbara Symphony  
**Barry Jekowsky**, Music Director, California Symphony  
**Laurel Karabian**, Los Angeles  
**Sharon C. McNalley**, Board of Directors, Los Angeles Chamber Orchestra  
**Henry J. Meyer**, Past President, Long Beach Symphony  
**Nancy Mims**, Human Resources Director, San Francisco Symphony  
**Neale Perl**, Executive Director, La Jolla Chamber Music Society  
**Dr. Gary S. Smith**, Division Director,  
Ohlone College Community Orchestra  
**Ann W. Vander Ende**, Past President, Philharmonia Barque Orchestra  
**Joyce Wright**, Past President, Monterey County Symphony

### Directors Emeriti

**Stewart Comer**, Manager, Music From Bear Valley  
**Suzanne Dewar**, Past President, Monterey County Symphony Guild  
**G. Michael Gehret**, Development Director, San Francisco Symphony  
**Don Jones**, retired, Chevron U.S.A., Inc.  
**Jean Squair**, patron, San Francisco Symphony

### Staff

**Kris W. Saslow**, Executive Director  
**Pia Sieroty Spector**, Administrative Assistant  
Association of California Symphony Orchestras  
P.O. Box 255445, Sacramento, CA 95865  
(916) 484-6744 FAX (916) 484-0503

Association of California  
Symphony Orchestras

Thanks

**ASCAP**

(American Society of Composers,  
Authors & Publishers)

For Sponsoring The  
Conductors' Sessions  
Friday, August 23rd

and

to

**Stephen Dunn  
& Associates**

For Sponsoring The  
Opening Luncheon  
Thursday, August 22nd

# POPS PIZAZZ!



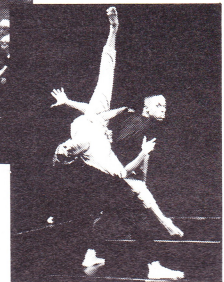
BEACHFRONT PROPERTY



THE KINGSTON TRIO



THE ALL-AMERICAN BOYS CHORUS  
A little magic...

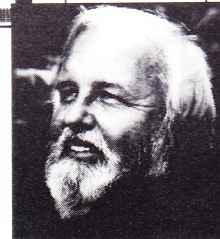


\*Lula Washington's  
LOS ANGELES  
CONTEMPORARY  
DANCE THEATRE  
CAC Touring Artist



THE  
LIMELITERS

\*10 member  
company performs  
Duke Ellington suite  
with orchestra  
Artists provide  
arrangements for  
joint performances  
with orchestra



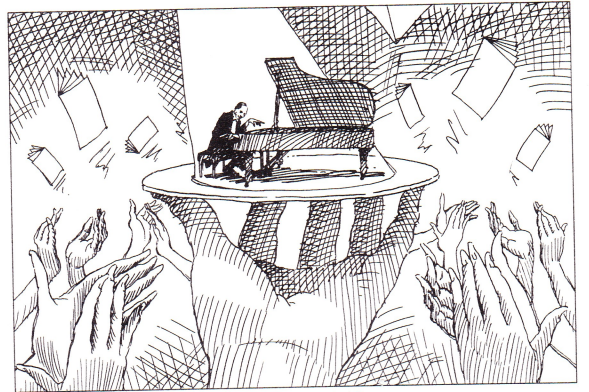
GLENN YARBROUGH



THE  
FOUR  
FRESHMEN

***Mary Beth Treen Artists Management***

1221 Scott Road • Burbank, California 91504 • (818) 846-6869



THE ARTS.

They spotlight  
joys and sorrows,  
realities  
and illusions,  
past and present.  
On stage. In music.  
On canvas.  
In dance. On film.  
And through  
sculpture that  
breathes life  
from glass,  
metal, wood  
and stone.  
We're pleased to  
help extend  
their vision.

